



Special parts for rail vehicles

Ferdinand Gross GmbH & Co. KG
www.schrauben-gross.de

Available from stock



Table of Contents

Self-locking nut with metallic clamping element	1-2
Self-locking nut with polyamide clamping element.....	3-4
Vargal self-locking nut	5
Locking rings VSK/SKR.....	6
Locking rings VSKD/SKR.....	7
Locking washers SKM/SKSM	8-9
Nord-Lock safety washers Type DNL	10
Nord-Lock safety washers Type NL SS.....	11
Nord-Lock safety washers Type DNL SP.....	12
Nord-Lock safety washers Type NL SP SS	13
Blanking plug with seal ring	14
Screw clamp with 2 nibs.....	15
T-head bolts for rail vehicles	16
Double spring cotter pin acc. to drawing.....	17
Spring bolts acc. to drawing.....	18
Locking tappet acc. to drawing.....	19-20
Bolts with head and split pin hole	21
Bolts with threaded ends acc. to drawing.....	22
Identification plate for freight wagons acc. to drawing.....	23
Wheel set tape acc. to drawing.....	24
Wheel set identification plate acc. to drawing.....	25-27
O-Rings.....	28
Interlayers acc. to drawing	29
Locking washers acc. to drawing	30
Locking plate acc. to drawing	31
Clamp plate acc. to drawing.....	32-34
Slotted nut acc. to drawing.....	35
Dubo-screw lock for hexagon screws.....	36
Concave discs shape A	37
Protection Washers shape B.....	38
Expansion screw acc. to drawing	39-41
Screw acc. to drawing	42
Expansion screw acc. to drawing	43
Hexagon screw ribbed acc. to drawing	44



Hexagon screw ribbed	45
Hexagon screw acc. to drawing	46
Hexagon screw with zinc scale surface	47-48
Hexagon trunnion screw acc. to drawing	49
Threaded bolt for brake caliper acc. to drawing	50
Push cap acc. to drawing	51
Press-in socket.....	52
Stopper acc. to drawing	53
Pin acc. to drawing	54-55
Caster acc. to drawing	56



Self-locking nut with metallic clamping element

ISO 7042 FS
Rail standard 205107-1

8
zinc plated and yellow passivated



Manufacturer: Flaig & Hommel

Further versions on request:

Steel: Grade 10
Stainless steel: A2/A4
Surface: zinc plated
Versions: fine thread

Installation site: general rail vehicles

	FG-Article No.	DB-Article No.	Dimension	PU	Test certificates
●	0581004645	143082	M 6	1000	
●	0581006245	143083	M 8	1000	
●	0581007545	143054	M 10	1000	
●	0581008845	143057	M 12	1000	
●	16008866 *		M 14	400	
●	0581010145	143062	M 16	500	DIN EN 10204 - 3.1
●	0583011004 *	1153952	M 18	100	DIN EN 10204 - 3.1
●	0581012745	143068	M 20	200	DIN EN 10204 - 3.1
●	0581014345	143072	M 24	200	DIN EN 10204 - 3.1
●	0581016945	143076	M 30	100	DIN EN 10204 - 3.1
●	1966026645	143079	M 36	50	DIN EN 10204 - 3.1

● stock goods

*DIN 980 FS

Self-locking nut with metallic clamping element

ISO 7042 FS
Rail standard 205107-1

8
Geomet 500 B



Manufacturer: Flaig & Hommel

Further versions on request:

Steel: Grade 10

Surface: Geomet 321

Versions: fine thread

Installation site: general rail vehicles

	FG-Article No.	DB-Article No.	Dimension	PU	Test certificates
●	00430748	1171433	M 10	500	
●	16000709	1171431	M 12	500	
●	00430715 *	807172	M 16	100	DIN EN 10204 - 3.1
●	16001002	902905	M 20	100	DIN EN 10204 - 3.1
●	19662251	775100	M 36	50	DIN EN 10204 - 3.1

- stock goods

*Geomet 500 A

Self-locking nut with polyamide clamping element

ISO 7040 brown ring
Rail standard 205107-3

8
zinc plated



Manufacturer: Flaig & Hommel

Further versions on request:

Steel: Grade 10

Stainless steel: A2/A4

Versions: fine thread

Low type acc. to DIN 985

Installation site: general rail vehicles

	FG-Article No.	DB-Article No.	Dimension	PU	Test certificates
●	0580004301	142990	M 6	2000	
●	0580006901	142991	M 8	2000	
●	0580007201	142992	M 10	1000	
●	0580008501	142993	M 12	1000	
●	00430666		M 14	100	
●	0580010801	933735	M 16	500	DIN EN 10204 - 3.1
●	00430455	1150277	M 18	100	DIN EN 10204 - 3.1
●	0580012401	142995	M 20	200	DIN EN 10204 - 3.1
●	0580014001	142996	M 24	100	DIN EN 10204 - 3.1
●	16041313	977699	M 30	50	DIN EN 10204 - 3.1
●	00430713	1173175	M 36	10	DIN EN 10204 - 3.1

- stock goods

Self-locking nut with polyamide clamping element

ISO 7040 brown ring
Rail standard 205107-3

8
Geomet 500 A



Manufacturer: Flaig & Hommel

Further versions on request:

Steel: Grade 10

Surface: Geomet 321

Versions: fine thread

Low type acc. to DIN 985

Installation site: general rail vehicles

	FG-Article No.	DB-Article No.	Dimension	PU	Test certificates
●	16042606 *		M 10	100	
●	00430762	1158898	M 12	250	
●	00430601	899779	M 16	200	DIN EN 10204 - 3.1
●	18360729	899768	M 20	200	DIN EN 10204 - 3.1

- stock goods

*Geomet 321 A

Vargal self-locking nut

Rail standard 205107-5

8
gal.Zn12blueCr3-240h



Further versions on request:

Steel: Grade 10
Stainless steel: A2
Versions: Low type
fine thread

Installation site: general rail vehicles

	FG-Article No.	DB-Article No.	Dimension	PU	Test certificates
●	68058751	143050	M 6	100	
●	1746813043	143052	M 8	1000	
●	1746870343	143055	M 10	700	
●	1746872943	143058	M 12	400	
●	1746812743	143064	M 16	200	DIN EN 10204 - 3.1
●	1746783043	143069	M 20	100	DIN EN 10204 - 3.1
●	1746873243	143073	M 24	50	DIN EN 10204 - 3.1
●	1966057043	143080	M 36	10	DIN EN 10204 - 3.1

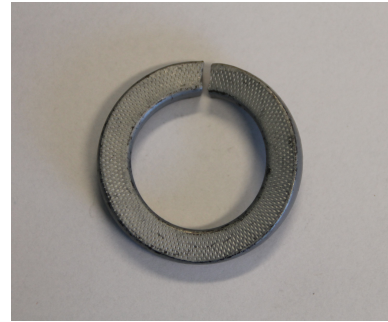
- stock goods

Locking rings VSK/SKR

Rail standard 208012-6

ST

Geomet 321 A - 480h



Further versions on request:

Surface:

zinc plated and yellow chromated

blank

Installation site: general rail vehicles

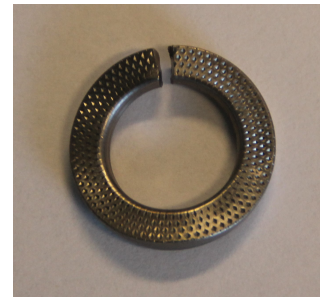
	FG-Article No.	DB-Article No.	Dimension	PU
●	0828010742	140349	4	1000
●	0828011042	140350	5	1000
●	0828012342	140351	6	1000
●	0828014942	140352	8	1000
●	0828016542	140353	10	500
●	0828017842	140354	12	500
●	0828018142	140355	14	250
●	0828019442	140356	16	200
●	0828020442	140357	18	100
●	0828021742	140358	20	100
●	0828022042	140359	22	100
●	0828023342	140360	24	50
●	0828024642	140361	27	50
●	0828025942	140362	30	25

- stock goods

Locking rings VSKD/SKR

Rail standard 208012-6

1.4310



Further versions on request:

SKS (narrow)

SKB (wide)

SKZ (for cheese-head screws)

Installation site: general rail vehicles

	FG-Article No.	DB-Article No.	Dimension	PU
●	11510107	140341	4	1000
●	11510110	140342	5	1000
●	11510123	140343	6	1000
●	11510149	140344	8	1000
●	11510165	140345	10	500
●	11510178	140346	12	500
●	11510194	140347	16	200
●	11510217	140348	20	100

- stock goods

Locking washers SKM/SKSM

Rail standard 208010-8

ST
Geomet 500-A/Geomet 321-A



Further versions on request:

SKS (narrow)
SKB (wide)
SKZ (for cheese-head screws)

Installation site: general rail vehicles

	FG-Article No.	DB-Article No.	Dimension	PU
●	0833005742		4	1000
●	0833006042		5	1000
●	0833007342		6	1000
●	0833009942		8	1000
●	0833010942		10	500
●	0833011242		12	500
●	0833012542	866744	14	250
●	0833013842	521620	16	200
●	0833015442	521623	20	50
●	0833017042	521624	24	25

- stock goods

Locking washers SKM/SKSM

Rail standard 208010-8

A4



Installation site: general rail vehicles

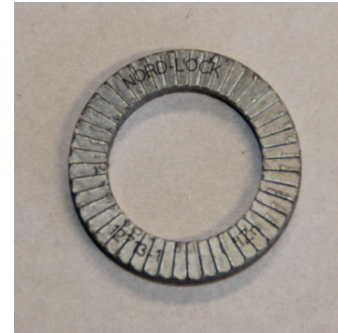
	FG-Article No.	DB-Article No.	Dimension	PU
●	16041070		4	1000
●	16041071	945256	5	1000
●	16041072		6	1000
●	16003742	925927	8	3000
●	16041074		10	500
●	16041075		12	500

- stock goods

Nord-Lock safety washers Type DNL

ST

D-Prot.KL100 VH302GZ



Manufacturer: Nord-Lock

More materials and versions on request.

Installation site: general rail vehicles

	FG-Article No.	DB-Article No.	Dimension	PU
●	0850002344		3	200
●	0850003644		3.5	200
●	0850004944		4	200
●	0850005244		5	200
●	0850006544	1215526	6	200
●	0850007844		8	200
●	0850008144	1100590	10	200
●	0850009444		11	200
●	0850010444	1100631	12	200
●	0850011744		14	100
●	0850012044	937432	16	100
●	0850013344		18	100
●	0850014644	810508	20	100
●	0850015944	810508	22	100
●	0850016244	951362	24	100
●	0850017544		27	50
●	0850018844	951361	30	50
●	0850019144		33	25
●	0850020144		36	25
●	0850021444		39	25
●	0850022744		42	25

- stock goods

Nord-Lock safety washers Type NL SS

A4



Manufacturer: Nord-Lock

More materials and versions on request.

Installation site: general rail vehicles

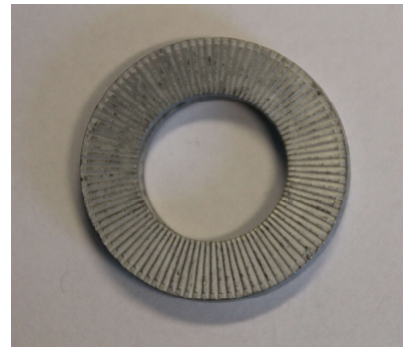
	FG-Article No.	DB-Article No.	Dimension	PU
●	11820020		3	200
●	11820033		3.5	200
●	11820046		4	200
●	11820059		5	200
●	11820062		6	200
●	11820075		8	200
●	11820088		10	200
●	11820091		11	200
●	11820101		12	200
●	11820114		14	100
●	11820127		16	100
●	11820130		18	500
●	11820143		20	100
●	11820156		22	50
●	11820169	833077	24	100
●	11820172		27	50
●	11820185		30	50
●	11820198		33	50
●	11820208		36	25
●	11820211		39	25
●	11820224		42	25

- stock goods

Nord-Lock safety washers Type DNL SP

ST

D-Prot.KL100 VH302GZ



Manufacturer: Nord-Lock

More materials and versions on request.

Installation site: general rail vehicles

	FG-Article No.	DB-Article No.	Dimension	PU
●	0859004644		4	200
●	0859005944		5	200
●	0859006244		6	200
●	0859007544		8	200
●	0859008844		10	200
●	0859009144		12	100
●	0859010144		14	100
●	0859011444	926738	16	100
●	0859012744		18	100
●	0859013044		20	100
●	0859014344		22	100
●	0859015644	796038	24	100
●	0859017244		30	10
●	0859018544		33	10
●	0859019844	1152010	36	25

- stock goods

Nord-Lock safety washers Type NL SP SS

A4



Manufacturer: Nord-Lock

More materials and versions on request.

Installation site: general rail vehicles

	FG-Article No.	DB-Article No.	Dimension	PU
●	11830036		3.5	200
●	11830049		4	200
●	11830052		5	200
●	11830065		6	200
●	11830078	957505	8	200
●	11830081	1120770	10	200
●	11830094		12	100
●	11830104		14	100
●	11830117		16	100
●	11830120		18	100
●	11830133		20	100
●	11830146		22	100
●	11830159		24	50
●	11830162		27	50
●	11830175		30	10

- stock goods

Blanking plug with seal ring

DIN 5586 B

ST

zinc plated and yellow chromated



Installation site: general rail vehicles

	FG-Article No.	DB-Article No.	Dimension	PU
●	00030279	144328	G 1/4"	200
●	16042501	245375	G 3/8"	200
●	1744661504	245374	G 1/2"	100
●	1744662804	245367	G 3/4"	50
●	1744663104	245369	G 1"	25
●	16042499	278546	G 1.1/2"	25
●	1744664404	245371	G 2"	5

- stock goods

Screw clamp with 2 nibs

DIN 25193

4.6



Installation site: freight wagons

	FG-Article No.	DB-Article No.	Dimension	PU
●	1668014201		M 12x60	50
	17456320	145223	M 12x70	upon request
●	17456333	936075	M 12x80	100
●	17456346	145225	M 12x90	100
●	17456359	145226	M 12x100	100
●	17456362	145227	M 12x110	100
●	17456375	145228	M 12x120	100

- stock goods

T-head bolts for rail vehicles

DIN 25192 B

8.8



Installation site: freight wagons

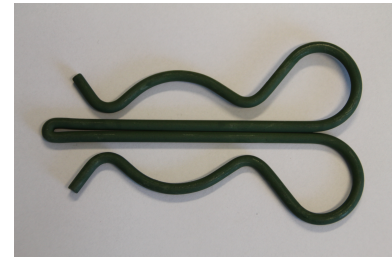
	FG-Article No.	DB-Article No.	Dimension	PU	Test certificate
●	00711117 *		M 12x50	25	
●	16680126		M 24x75	25	DIN EN 10204 - 3.1
●	16680139		M 24x80	25	DIN EN 10204 - 3.1
	17457125	1153978	M 24x90	upon request	DIN EN 10204 - 3.1
●	17456702	145233	M 16x120	100	DIN EN 10204 - 3.1

- stock goods

*zinc plated

**Double spring cotter pin
acc. to drawing
Stw506.94.002"J"**

Type C DIN 17223



Installation site: general rail vehicles / bolts

	FG-Article No.	DB-Article No.	Dimension	PU
●	18631206	248850	size 1 D=1,4 green	500
●	18631207	248852	size 2 D=1,8 silver	500
●	18631208	248858	size 3 D=2,25 dark blue	500
●	18631210	248859	size 4 D=2,8 light blue	500
●	18631211	248867	size 5 D=3,0 silver	500
●	18631212	248878	size 6 D=3,5 green	250
●	18631213	255071	size 7 D=4,0 light blue	250
●	18631214	248882	size 8 D=4,25 dark blue	100
●	18631215	255072	size 9 D=4,5 green	100

- stock goods

**Spring bolts acc. to
drawing
Stw505.81.048
Edition 06 Pos. 1**



E360 (St70-2)

Installation site: freight car bogie

	FG-Article No.	DB-Article No.	Dimension	PU	Test certificates
●	S0945783	141524	35x260 normalized	250	test category 1 / DIN EN 10204 - 3.1

- stock goods

**Locking tappet acc. to drawing
Fwg750.02.027.03 "G" MSP C
for spring bolts dia. 35**

S235JR (1.0038) EN10025-2



Installation site: freight wagons

	FG-Article No.	DB-Article No.	Dimension	PU	Test certificates
●	S0948573	101055	62x40x21	100	DIN EN 10204 - 3.1

- stock goods

**Locking tappet acc. to drawing
Fwg750.02.027.03 "G" MSP A
for spring bolts dia. 40**

S235JR (1.0038) EN10025-2



Installation site: freight wagons

	FG-Article No.	DB-Article No.	Dimension	PU	Test certificates
•	S0953827	827176	67x45x25	50	DIN EN 10204 - 3.1

- stock goods

Bolts with head and split pin hole

DIN 5526 B

C45N



Further dimensions on request.

Installation site: freight wagons

	FG-Article No.	DB-Article No.	Dimension	PU
●	17456294	141076	12 c11x90x85 - H	200

- stock goods

**Bolts with threaded ends
acc. to drawing
Stw505.71.028 "F" Pos. 2**

C45+N
surface induction hardened



More bolts with threaded ends on request.

Installation site: freight wagons

	FG-Article No.	DB-Article No.	Dimension	PU	Test certificates
•	S0956565	258699	M16 / 24 c11x115x82	25	DIN EN 10204 - 3.1

- stock goods

**Identification plate for
freight wagons acc. to
drawing
4Fwg000.0.10.030.073 "C"
unprinted**



CuZn39Pb2-R420

Installation site: freight wagons

	FG-Article No.	DB-Article No.	Dimension	PU
●	S0687601	101414	80x18x2	100

- stock goods

**Wheel set tape acc. to drawing
45.005.00 "A"
unstamped**



Installation site: general rail vehicles / wheel set

	FG-Article No.	DB-Article No.	Dimension	PU	Material
•	18603694	957526	52x40/17 t=2	200	ST zinc plated
•	S0625841		52x40/17 t=2	500	1.4301

- stock goods

**Wheel set identification
plate acc. to drawing
4Fwg000.0.02.001.035 "D" Pos.1
DB stamped**

1.4301



Installation site: general rail vehicles / wheel set

	FG-Article No.	DB-Article No.	Dimension	PU
●	18602061	950791	dia. 18/70x40	200

- stock goods

**Wheel set identification
plate acc. to drawing
4Fwg000.0.02.001.035 "D" Pos.2
DB stamped**

1.4301



Installation site: general rail vehicles / wheel set

	FG-Article No.	DB-Article No.	Dimension	PU
●	18602538	950792	dia. 22/70x40	100

- stock goods

**Wheel set identification
plate acc. to drawing
4Fwg000.0.02.001.035 "D" Pos.3
DB stamped**

1.4301



Installation site: general rail vehicles / wheel set

FG-Article No.	DB-Article No.	Dimension	PU
18603870	956126	dia. 26/70x40	upon request

O-Rings

NBR 70



Installation site: general rail vehicles / wheel set

	FG-Article No.	DB-Article No.	Dimension	PU
●	18632382	151336	237x3.15	100

- stock goods

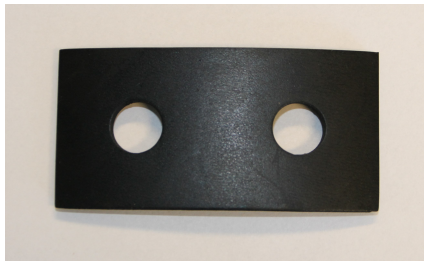
**Interlayers acc. to
drawing
Stw550.06.002 "F"**

Elastomer 60 +/- 5 Shore A

Installation site: freight wagons

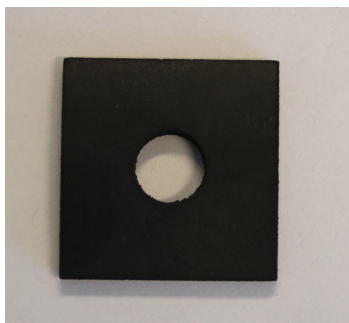
	FG-Article No.	DB-Article No.	Dimension	PU
•	S0931153	150465	40x4x80	300

- stock goods



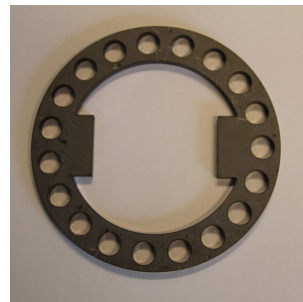
	FG-Article No.	DB-Article No.	Dimension	PU
•	S0931166	150466	40x4x40	400

- stock goods



**Locking washers acc. to
drawing
Fwg850.02.001.022**

S235JRC
with 19 bores à 11 mm



Installation site: freight wagons / wheel set

	FG-Article No.	DB-Article No.	Dimension	PU
●	18605261	100866	84x120x5	100

- stock goods

**Locking plate acc. to
drawing
4Fwg665.0.02.001.030 Pos.2**

BI 1.5 DIN EN 10130 Fe



Installation site: freight wagons / wheel set

	FG-Article No.	DB-Article No.	Dimension	PU
•	18605812	1137398	95x150x35x50 t=1.5	100

- stock goods

**Clamp plate acc. to
drawing
Fw0811.21.065.01.02 "6"**

Steel



Installation site: freight wagons

	FG-Article No.	DB-Article No.	Dimension	PU
•	18617595	326790	50x36x6x15 /R6	200

- stock goods

**Clamp plate acc. to
drawing
Fwg601.21.065.01
Current No. 3**

Steel



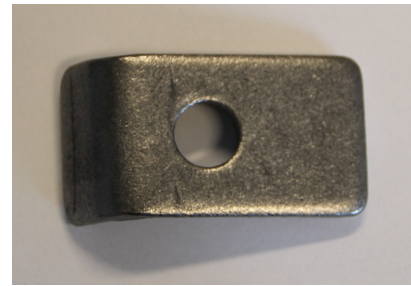
Installation site: freight wagons

	FG-Article No.	DB-Article No.	Dimension	PU
•	18633090	207289	50x35x22x6 /R6	100

- stock goods

**Clamp plate acc. to
drawing
Fwg601.21.065.01
Current No. 1**

Steel



Installation site: freight wagons

	FG-Article No.	DB-Article No.	Dimension	PU
•	18618756		50x35x12x6 /R2.5	100

- stock goods

**Slotted nut acc. to
drawing
4Fwg850.02.001.21 *L*
Edition 12**

S355J2



Installation site: freight wagons / wheel set

	FG-Article No.	DB-Article No.	Dimension	PU	Test certificates
●	S0926197	100865	M 90x4	1	DIN EN 10204 - 3.1

- stock goods

Dubo-screw lock for hexagon screws

PA
black, UV resistance



Installation site: general rail vehicles

	FG-Article No.	DB-Article No.	Dimension	PU
●	16076533		M 6	500
●	16076534		M 16	500
●	16076535		M 12	500
●	16076536		M 10	500

- stock goods

Concave discs shape A

Rail standard 208001-1

CuZn37 nickel-plated



Installation site: passenger carriages

	FG-Article No.	DB-Article No.	Dimension	PU
•	1745418610	149888	Size 4	500
•	16041925	149889	Size 5	200
•	1745420910	149890	Size 6	500

- stock goods

Protection Washers shape B

Rail standard 208001-2

CuZn37 nickel-plated



Installation site: passenger carriages

	FG-Article No.	DB-Article No.	Dimension	PU
●	1940161910	149882	Size 3	5000
●	1940163510	149883	Size 3,5	5000
●	1940162210	149884	Size 4	5000
●	1745656610	149885	Size 5	1000
●	1745655310	149881	Size 6	1000

- stock goods

**Expansion screw acc. to drawing
Stw510.55.022 *A***

8.8
with primer coat



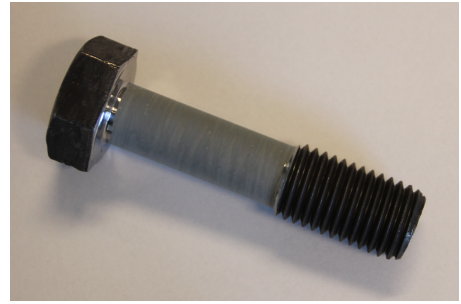
Installation site: general rail vehicles

	FG-Article No.	DB-Article No.	Dimension	PU	Test certificates
●	18611232	143682	M 20x60	50	DIN EN 10204 - 3.1

- stock goods

**Expansion screw acc. to drawing
Stw510.55.022 *A***

8.8
with primer coat



Installation site: general rail vehicles

	FG-Article No.	DB-Article No.	Dimension	PU	Test certificates
●	18611245	143694	M 20x80	50	DIN EN 10204 - 3.1

- stock goods

**Expansion screw acc. to drawing
4Fwp930.04.018.045 *01***

8.8
with primer coat



Installation site: general rail vehicles

	FG-Article No.	DB-Article No.	Dimension	PU	Test certificates
●	18633509	832480	M 20x100	50	DIN EN 10204 - 3.1

- stock goods

**Screw acc. to drawing
Stw510.55.019 *E***

8.8
zinc dust paint grey



Installation site: general rail vehicles

	FG-Article No.	DB-Article No.	Dimension	PU	Test certificates
	S0654249	105248	M 20x150	25	DIN EN 10204 - 3.1

Available on request

**Expansion screw acc. to drawing
Fwp930.04.018.41 *H***

42CrMo4
with primer coat



Installation site: general rail vehicles

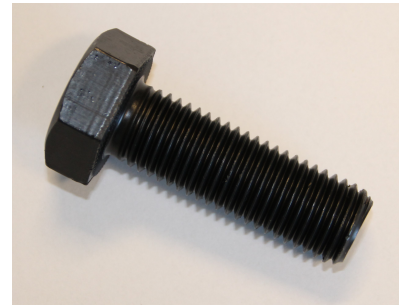
	FG-Article No.	DB-Article No.	Dimension	PU	Test certificates
●	18610301	171423	M 24x1.5x163	25	DIN EN 10204 - 3.1

- stock goods

**Hexagon screw ribbed
acc. to drawing
DBS205031-02/143709 Stat.1**

Rail standard 205031-2

KL 100



Installation site: general rail vehicles / wheel set

	FG-Article No.	DB-Article No.	Dimension	PU	Test certificates
●	18608656	143709	M 20x60	50	DIN EN 10204 - 3.1

- stock goods

Hexagon screw ribbed

Rail standard 205031-1

FK 100



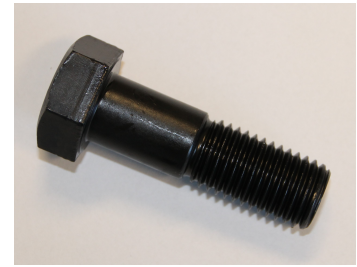
Further dimensions and with zinc scale surface on stock.

Installation site: general rail vehicles / wheel set

	FG-Article No.	DB-Article No.	Dimension	PU	Test certificates
●	03191055	143705	M 16x60	50	DIN EN 10204 - 3.1

- stock goods

Hexagon screw acc. to drawing
Stw510.06.005 *H*
Current No. 9



8.8

Installation site: general rail vehicles / wheel set

	FG-Article No.	DB-Article No.	Dimension	PU	Test certificates
•	18610550	143317	M 20x65	50	DIN EN 10204 - 3.1

- stock goods

Hexagon screw with zinc scale surface

ISO 4017 / DIN 933

8.8

Geomet 321 A + VL



**Further strength classes, standards and dimensions on request.
Partly from stock.**

Installation site: general rail vehicles

	FG-Article No.	DB-Article No.	Dimension	PU	Test certificates
●	00557621	1157697	M 16x40	50	DIN EN 10204 - 3.1
●	16042391	1123078	M 16x55	50	DIN EN 10204 - 3.1
●	00559414	1177038	M 20x70	100	DIN EN 10204 - 3.1

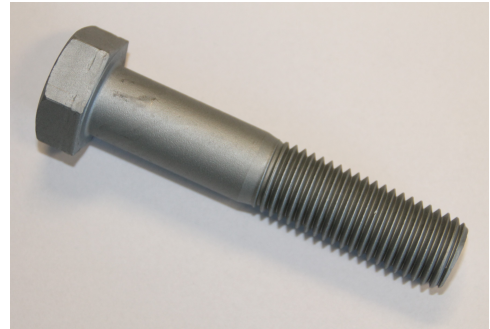
- stock goods

Hexagon screw with zinc scale surface

ISO 4014 / DIN 931

8.8

Geomet 321 A + VL



**Further strength classes, standards and dimensions on request.
Partly from stock.**

Installation site: general rail vehicles

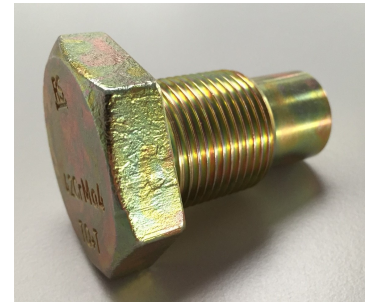
	FG-Article No.	DB-Article No.	Dimension	PU	Test certificates
●	00557211	1157733	M 16x70		DIN EN 10204 - 3.1
●	00557105	1151382	M 16x100		DIN EN 10204 - 3.1
●	1709588847	1150201	M 16x110		DIN EN 10204 - 3.1
●	00555609	1150108	M 16x120		DIN EN 10204 - 3.1
●	16041964	1123079	M 20x100		DIN EN 10204 - 3.1
●	00556056	1142728	M 20x90		DIN EN 10204 - 3.1
●	00555614	1150196	M 20x100		DIN EN 10204 - 3.1
●	00554859	1157681	M 20x120		DIN EN 10204 - 3.1
●	00558309	1156287	M 20x140		DIN EN 10204 - 3.1
●	00558310	1156351	M 20x180		DIN EN 10204 - 3.1

- stock goods

**Hexagon trunnion screw
acc. to drawing
FG DB00940374**

42CrMo4 TQ+T

zinc plated and yellow chromated



Installation site: brake caliper of electric locomotive

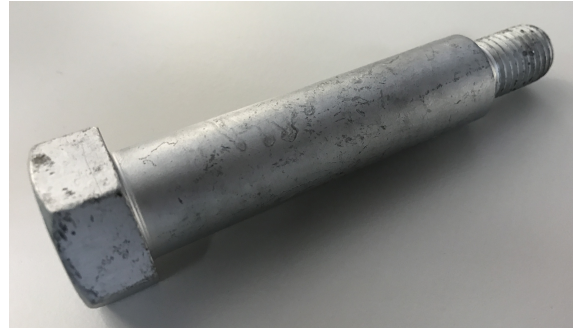
	FG-Article No.	DB-Article No.	Dimension	PU	Test certificates
●	S0946038	940374	M 30x2x50	25	DIN EN 10204 - 3.1

- stock goods

**Threaded bolt for brake caliper acc. to drawing
FG DB00726606 Rev.1**

C45 QT

zinc scale 480h



Further versions on request.

Installation site: brake caliper

	FG-Article No.	DB-Article No.	Dimension	PU	Test certificates
●	S0940694	726606	M16/ dia. 22x83/108	24	DIN EN 10204 - 3.1

- stock goods

**Push cap acc. to drawing
3Fwg665.0.02.001.025 *J*
Edition 10**

EN 10025 - E295 St50-2



Installation site: freight wagons / wheel set

	FG-Article No.	DB-Article No.	Dimension	PU	Test certificates
●	S0963192	100867	148x131.5+0.5x23+1	25	DIN EN 10204 - 3.1

- stock goods

Press-in socket

Rail standard 206104

C60
slitted



Installation site: freight wagons

	FG-Article No.	DB-Article No.	Dimension	PU
•	00021413	516846	25x33x12	200

- stock goods

**Stopper acc. to drawing
4Fwg106.0.04.082.031 *A*
MSP A Edition 02**

C45
surface induction hardened



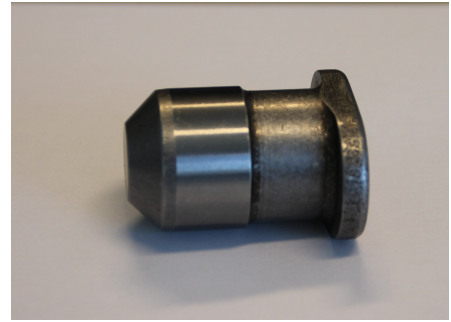
Installation site: freight wagons

	FG-Article No.	DB-Article No.	Dimension	PU	Test certificates
•	18681332	981156	M 20x117	10	DIN EN 10204 - 3.1

- stock goods

Pin acc. to drawing
3Fwg696.0.04.018.001
Pos. 1

18CD4
hardened, blank



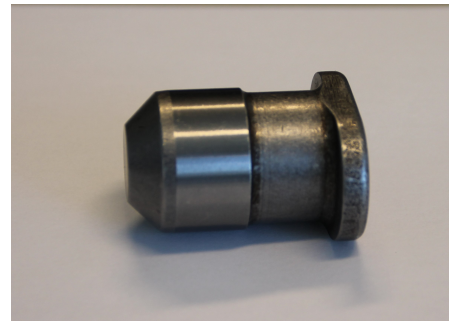
Installation site: freight wagons

	FG-Article No.	DB-Article No.	Dimension	PU	Test certificates
•	S0979733	105888	32 s7x51	50	DIN EN 10204 - 3.1

- stock goods

Pin acc. to drawing
3Fwg696.0.04.018.001
Pos. 2

18CD4
hardened, blank



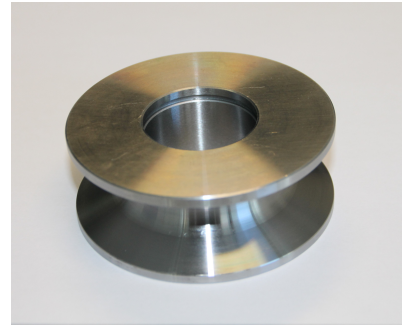
Installation site: freight wagons

	FG-Article No.	DB-Article No.	Dimension	PU	Test certificates
●	S0979746	105887	32 s7x45	50	DIN EN 10204 - 3.1

- stock goods

**Caster acc. to drawing
4Fwg302.0.21.025.051
Edition 4 Index C**

C35
blank



Installation site: freight wagons

	FG-Article No.	DB-Article No.	Dimension	PU
●	S0984139	206763	35x85x25.2	25

- stock goods